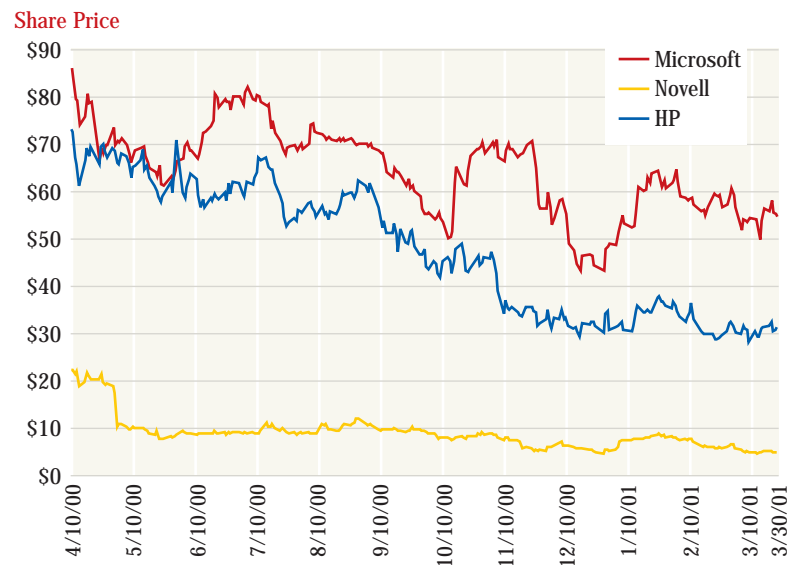
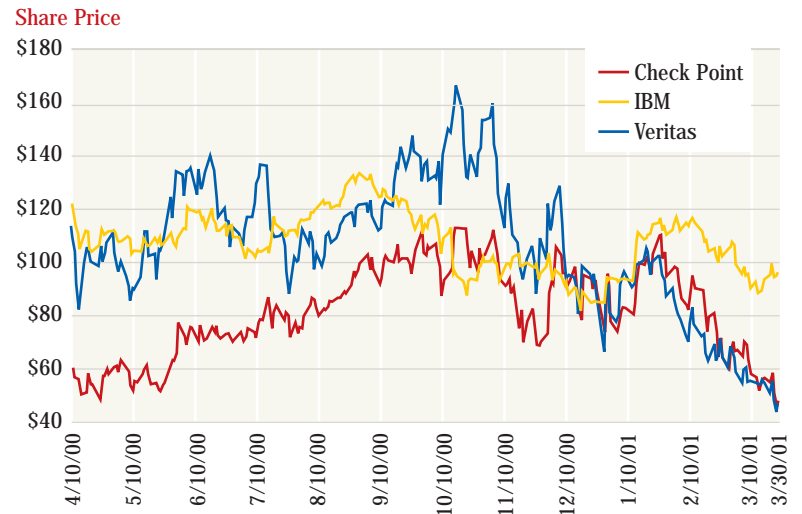


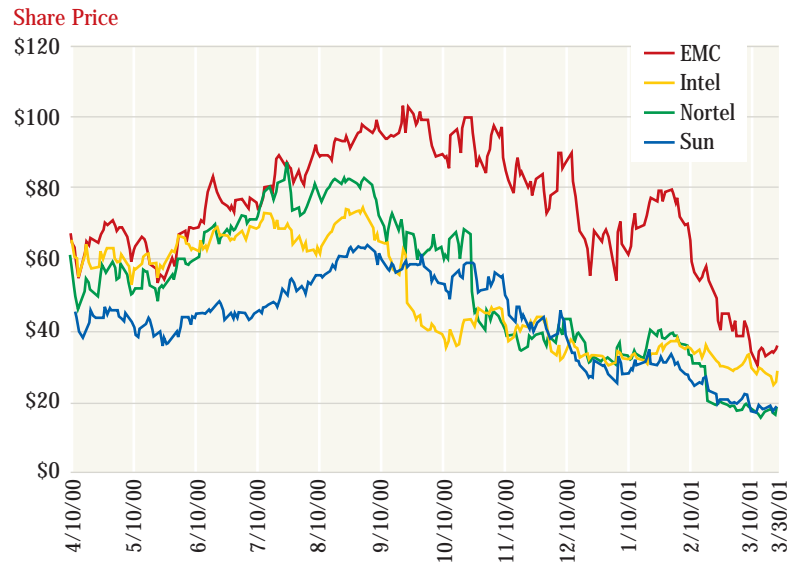
**Crash of the titans** Once the high-flying of the industry, these companies' stocks suffered harshly in the last 12 months.



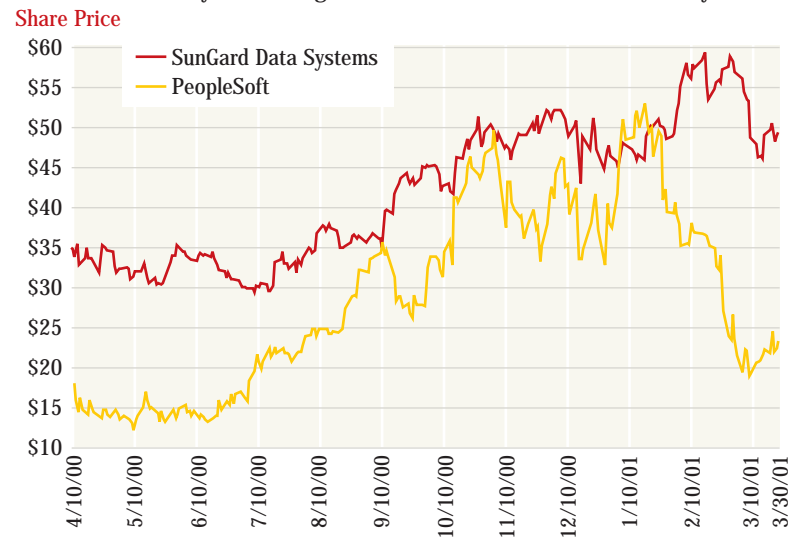
**Riding roughshod** Up? Down? The wildest rides of them all.



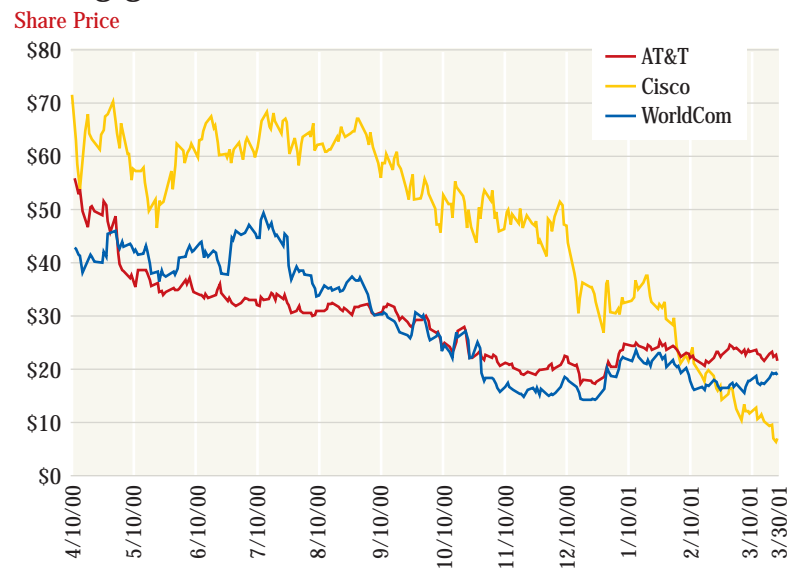
**Summer spikes** These hot summer stocks cooled in the fall.



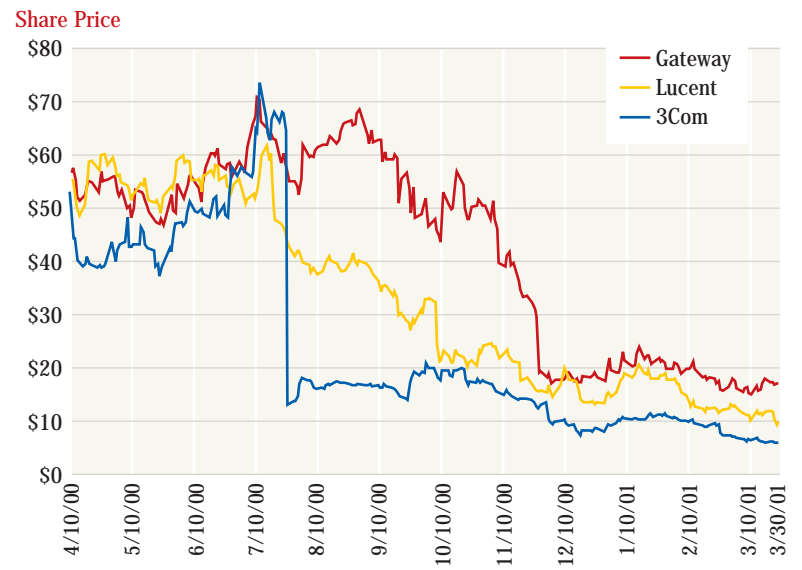
**A smattering of good news** While the rides weren't smooth, these stocks were the only ones that gained value in the NW200 Index's first year.



**Losing ground** Stocks from these companies jackhammered downward.



**Nose dives** These stocks each took a short, painful fall.



All charts based on daily close prices.